

19NINETEEN

CLARENDON APARTMENTS



ARLINGTON | VIRGINIA

191-unit residential mixed-use development with 17,300 square feet of retail on the ground floor. Conveniently located one block from the Courthouse Metro Station in the Rosslyn-Ballston Metro Corridor in the heart of Arlington. 19Nineteen, a LEED Silver development, is a loft-style building featuring well-appointed luxury apartment homes in a variety of spacious floor plans. Each apartment home features Italian cabinetry, stylish fully-equipped kitchens with movable islands and granite countertops throughout. Ground floor retail includes two upscale restaurants and a high-end fitness facility. Construction began March 2012, first units delivered March 2014, and the project was completed in May 2014.

PROJECT DESCRIPTION

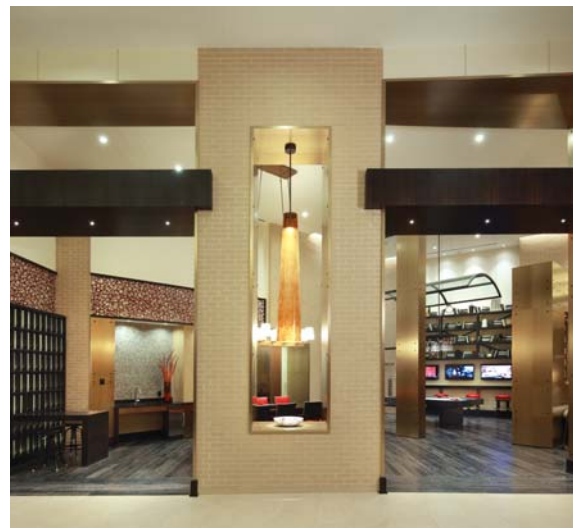
Units: 191, Midrise

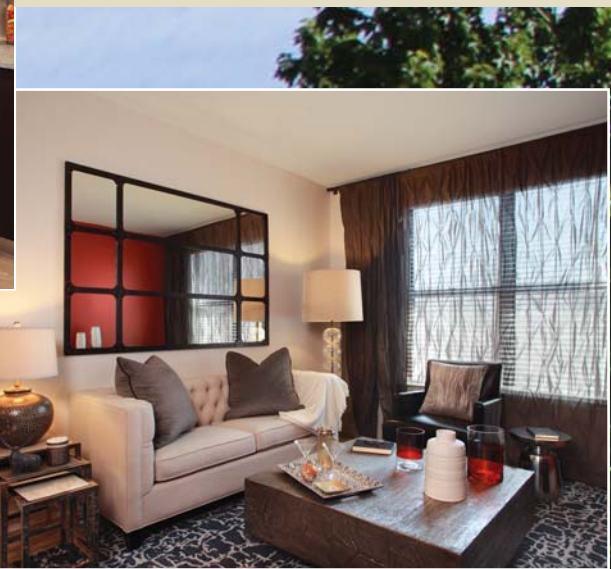
Average Unit Size: 811

Project Completed: May 2014

Capital Partner:

USAA Real Estate Company





AMENITIES

ONE BLOCK TO METRO STATION
SPACIOUS FLOOR PLANS
ITALIAN CABINETRY
GRANITE COUNTERTOPS
TWO UPSCALE RESTAURANTS
HIGH-END FITNESS FACILITY

